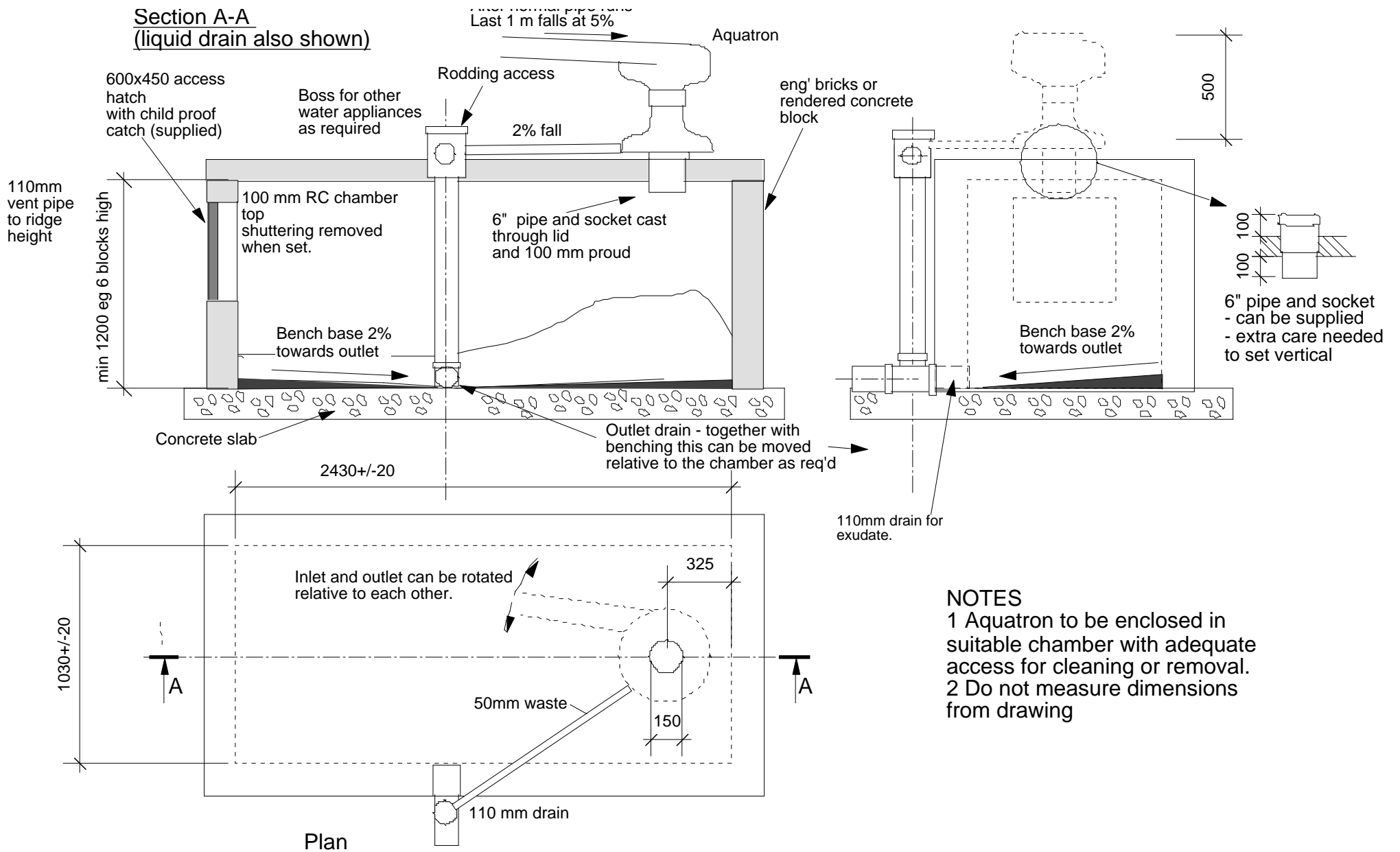


**Section A-A**  
(liquid drain also shown)



**NOTES**  
 1 Aquatron to be enclosed in suitable chamber with adequate access for cleaning or removal.  
 2 Do not measure dimensions from drawing

Title: Aquatron separator and chamber	DRG. No.:	
	CLIENT:	
ELEMENTAL SOLUTIONS BS 308	DATE:	DRAWN:
	SCALE:	DISCUSS:

